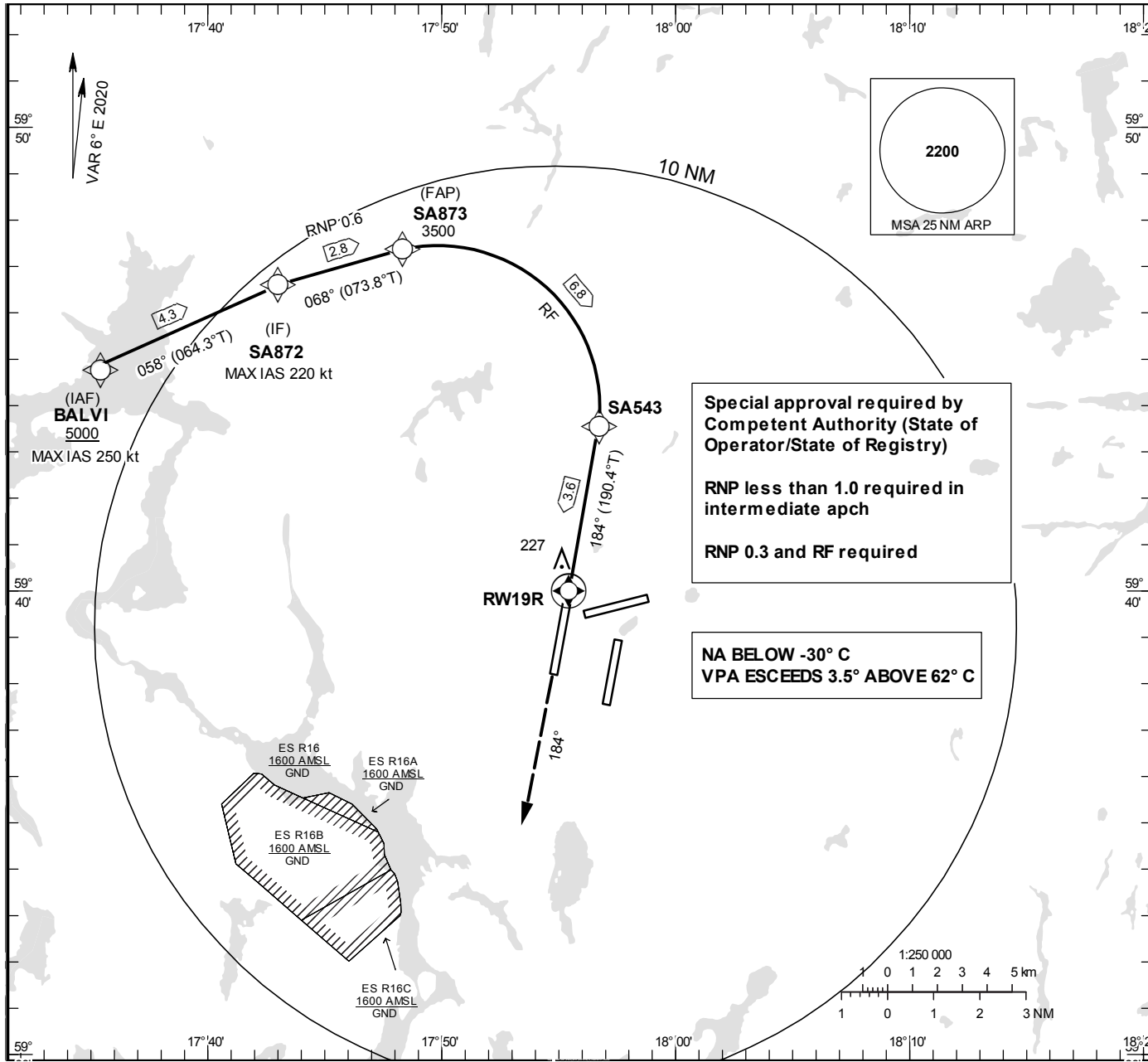


STOCKHOLM/Arlanda  
RNP x RWY 19R (AR)

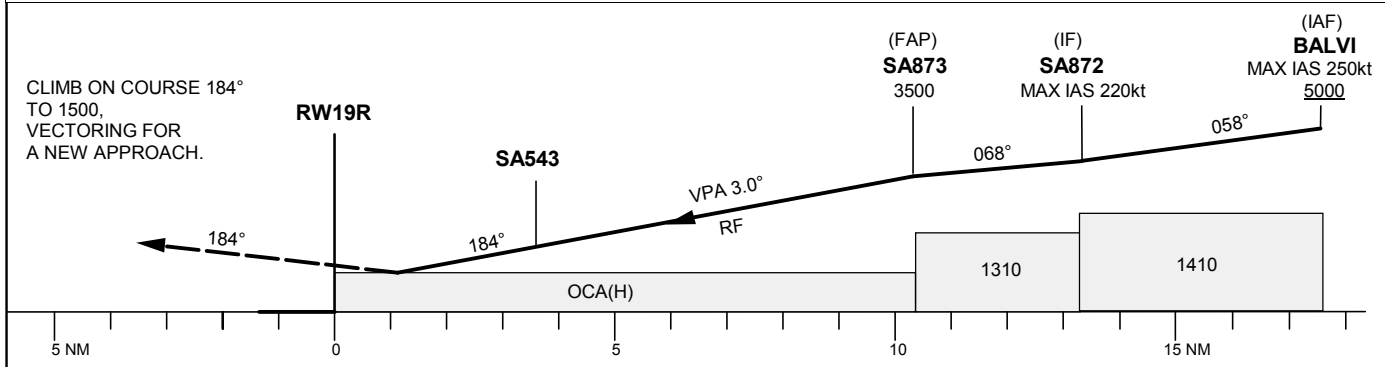
INSTRUMENT  
APPROACH  
CHART – ICAO

THR ELEV 118.2 ft, AD ELEV 138 ft  
OCH are related to THR.  
BRG are MAG (True).  
ALT, HGT and ELEV in ft.

ARLANDA TOWER 128.730/  
118.505/125.130  
ARLANDA ATIS ARR 119.005  
STOCKHOLM APPROACH 123.755



TA 5000 ft AMSL RDH 50.9 ft Special Com Failure Procedures see ESSA AD 2.22



OCA (H)					Dist to RWY19R									
Cat of ACFT	A	B	C	D	1	2	3	4	5	6	7	8	9	10
RNP 0.3	480 (362)				488	806	1124	1443	1761	2080	2398	2717	3035	3353

STOCKHOLM/Arlanda

Prescribed Coding/Description RNP x RWY 19R (AR)

Path Desc	Waypoint Identifier	Fly-over	Course °M(°T)	Dist (NM)	Turn Dir	Rest Alts (ft AMSL)	Speed Limits (kt)	VPA/ RDH (°/ft)	ARC Radius (NM)	ARC Center	Nav Spec
IF	BALVI	-	-	-	-	+5000	-250	-	-	-	RNP 1.0
TF	SA872	-	058° (064.3°)	4.3	-	-	-220	-	-	-	RNP 1.0
TF	SA873	-	068° (073.8°)	2.8	-	@3500	-	-	-	-	RNP 0.6
RF	SA543	-	-	6.8	R	-	-	-3.00	3.3665	SA876	RNP 0.3
TF	RW19R	Y	184° (190.4°)	3.6		@169	-	-3.00/50.9	-	-	RNP 0.3
CA	-	-	184° (190.4°)	-	-	+1500	-	-	-	-	RNP APCH
VM	-	-	184°	-	-	@1500	-	-	-	-	RNP APCH